

Operation of PRV

Turn adjustment bolt on PB3 clockwise fully.

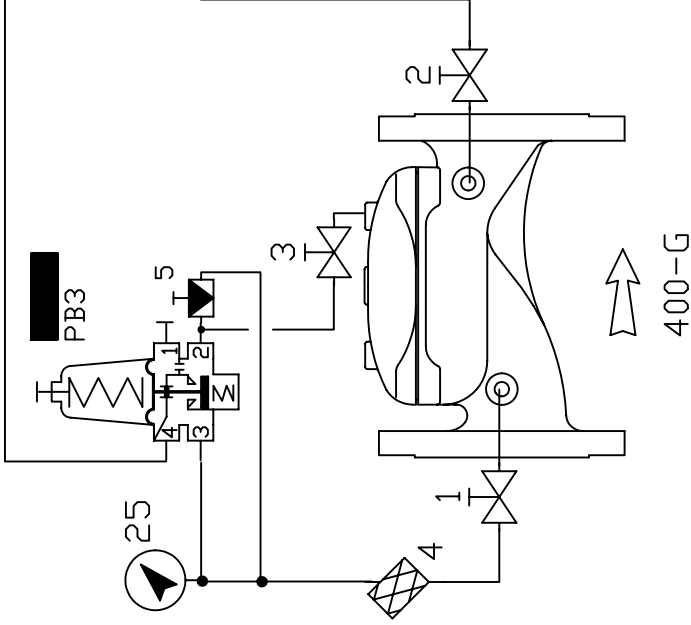
Open valves 1 , 2 and 3

Turn needle valve in clockwise fully and back off 1-1/2 turns

Apply pressure to inlet of valve and vent air from chamber by relaxing one of brass fittings.

Turn adjustment bolt on PB3 anti-clockwise slowly until valve opens. Continue to turn until desired pressure is achieved and tighten the locknut on the pilot.

Valve is now set.



Parts

- 1 Inlet ball valve
- 2 Outlet ball valve (valve close)
- 3 Bonnet ball valve (freeze valve)
- 4 Inlet strainer
- 5 Needle Valve
- 6 PB3 2 way sustaining pilot

Bermad Water Technologies
2 Inglewood Drive , Thomastown , Vic 3074
Ph (03) 9464 5949 Fax (03) 9464 2382

Project : 430-PB3

Drawn by :
Date :

Drawing Number :

Email Address
bermad.colin@smart.net.au

Revision Number / Date



Pressure Sustaining Pilot Valve

This is a direct acting valve, actuated by a pressure responsive diaphragm, which tends to reach equilibrium with the set spring force. When used in a pressure relief/sustaining circuit, the pilot modulates open as upstream pressure rises above set point.

Features

- Internal or external pressure sensing
- Differential pressure sensing
- Direct pressure gauge installation

Typical Applications

- Pressure relief/sustaining valve sizes 1 1/2"-4" (Standard model #3PB).
- Differential Pressure sustaining valve sizes 1 1/2"-4" (Modified to differential sensing #3PB-D)

Technical Data

Pressure Rating: 25 bar (350 psi)

Working Temperature: Water up to 80°C (180°F)

Flow Factor: Kv 0.48 (Cv 0.56)

Standard Materials:

Body: Bronze

Cover: Brass

Elastomers: NBR

Internals: Stainless Steel & Brass

Spring: Galvanized Steel

Optional Materials:

Metal Parts: Stainless Steel, Nickel Aluminum Bronze, Hastalloy

Elastomers: FPM (Viton®)

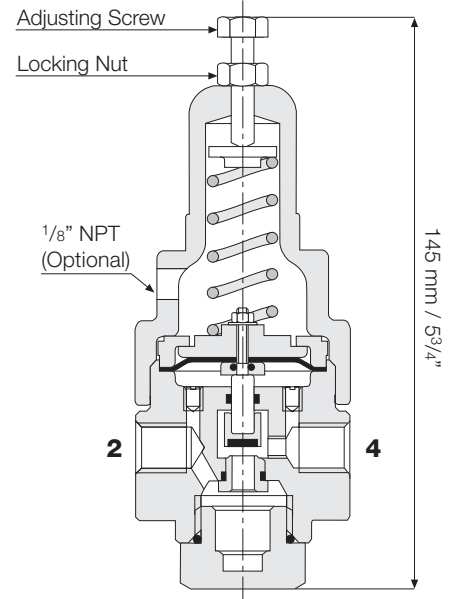
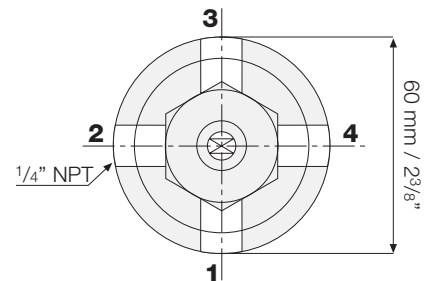
Adjustment Range

Spring	Pressure		
	bar	psi	
M	1-16	15-230	Standard
N	0.8-6.5	11-95	Optional
J	0.2-1.7	3-25	

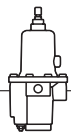
Connections

- 1 - Remote sensing or pressure gauge
- 2 - Valve control chamber
- 3 - Remote sensing or pressure gauge
- 4 - Downstream

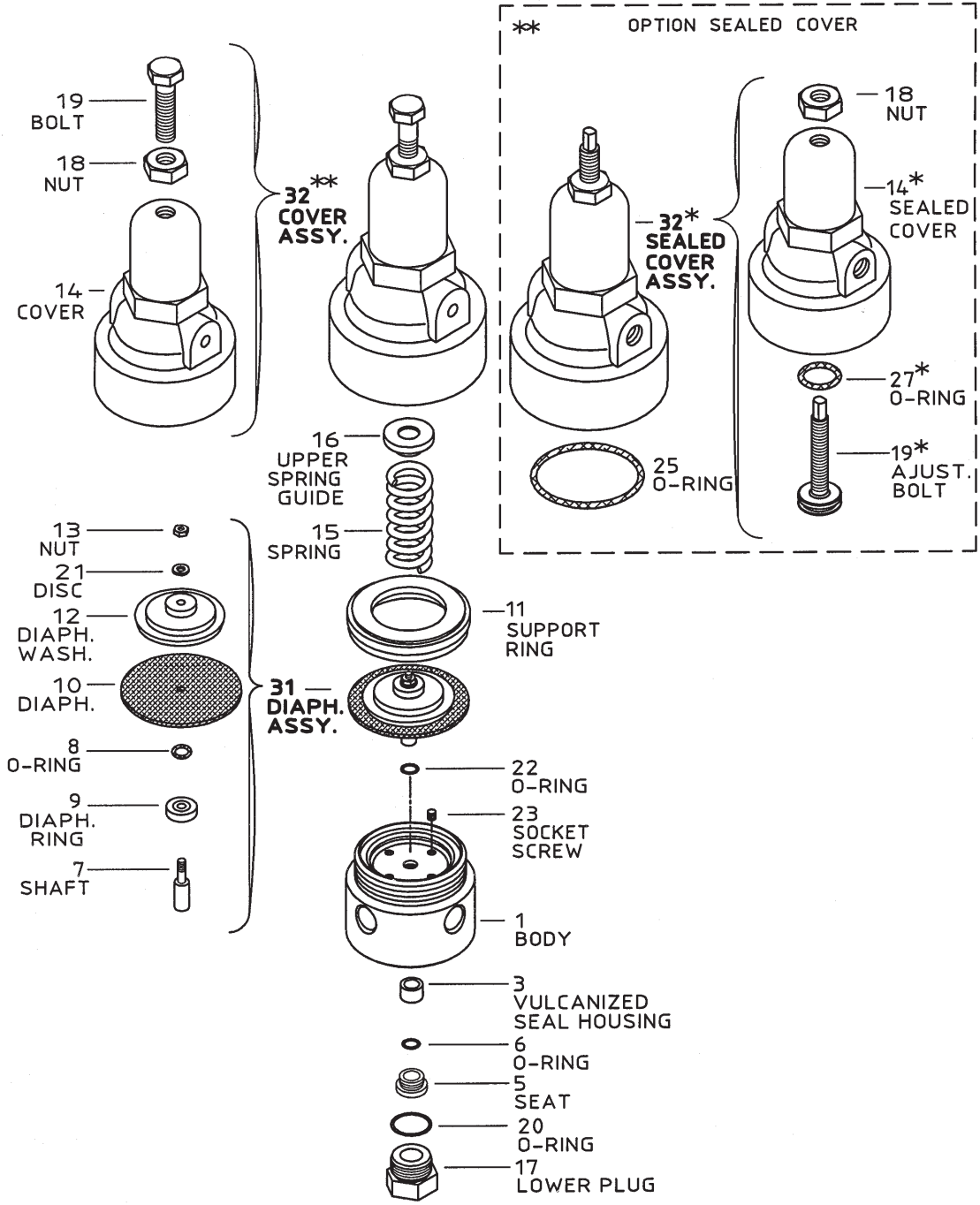
* Upstream pressure is connected to valve control chamber via a restriction.



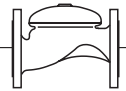
Weight: 1.5 Kg / 3.3 lbs.



#3PB 2-way Pressure Sustaining Pilot Valve



* - FOR SEALED COVER ONLY



Basic Control Valves for Waterworks (WW)

Sizes: 2"-10"

